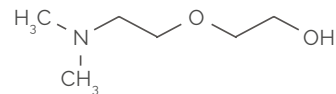


- **Chemical formula:** C₆H₁₅NO₂
- **CAS No.:** 1704-62-7
- **HS No.:** 2922 1900
- **Registration No.:** 01-2119976346-26-0004
- **Appearance:** Clear, colorless or slightly yellowish flammable liquid with a slight amine odor.



GENERAL CHARACTERISTICS

Parameter	Unit	Requirements
Density at 20 °C	kg/m ³	950
Boiling point	°C	203.7
Flash point	°C	90
Melting point	°C	<-20

APPLICATIONS AREA

Dimethylaminoethoxyethanol is used as a catalyst in the production of polyurethane materials.

SEGMENTS

- Low emission amine catalyst
- Initial product for chemical syntheses

SPECIFICATIONS

Parameter	Unit	Requirements
2-[2-(dimethylamino)ethoxy]ethanol	wt. % min.	99.0
Water	wt. % max.	0.2

SYNONYMS

2-[2-(dimethylamino)ethoxy]ethanol

HEALTH HAZARD EFFECTS

Harmful if swallowed. Causes severe skin burns and eye damage.

ADR REGULATIONS

UN 2735 Amines, Liquid, Corrosive, n.o.s.
(2-[2-(Dimethylamino)ethoxy]ethanol), 8, II, (E)

PACKAGING

Road tank cars
Drums (216 l) 195 kg net
IBC (1,000 l) 910 kg net
Tank containers