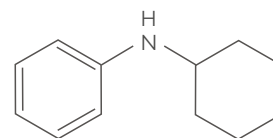


- **Chemical formula:** C<sub>12</sub>H<sub>17</sub>N
- **CAS No.:** 1821-36-9
- **HS No.:** 2921 4900
- **Appearance:** N-phenylcyclohexylamine is a clear, colorless or slightly yellowish flammable liquid with specific amine odor.



## GENERAL CHARACTERISTICS

Parameter	Unit	Requirements
Density at 20 °C	kg/m <sup>3</sup>	996
Boiling point	°C	279
Flash point	°C	136
Melting point	°C	15

## APPLICATIONS AREA

N-phenylcyclohexylamine is mainly used as intermediate in organic synthesis in **rubber industry**.

## SEGMENTS

- **Rubber industry**

## SPECIFICATIONS

Parameter	Unit	Requirements
<b>N-phenylcyclohexylamine</b>	wt. % min.	98.0
Water	wt. % max.	0.2

## SYNONYMS

N-Cyclohexylaniline

## HEALTH HAZARD EFFECTS

Harmful if swallowed, in contact with skin or if inhaled.  
Irritating to eyes, respiratory system and skin.

## ADR REGULATIONS

UN 2810 Toxic Liquid, Organic, n.o.s. (N-Cyklohexylanilin), 6.1, III, (E)

## PACKAGING

Drums (216 l) 205 kg net  
IBC (1.000 l) 956 kg net